

No Change

INDIANA  
DEPARTMENT OF  
TRANSPORTATION

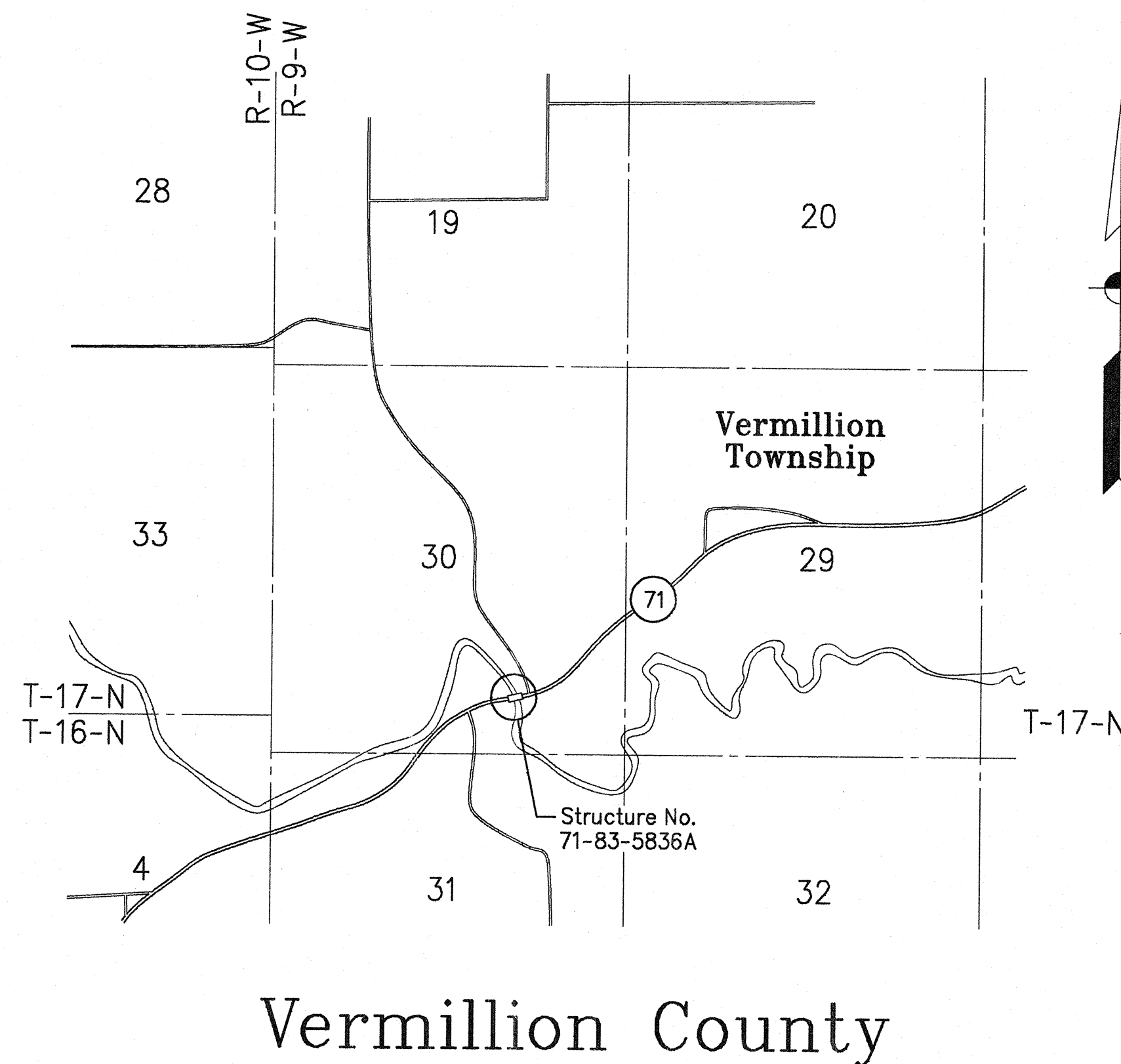
BRIDGES OVER 20' SPAN					
FEDERAL REGION NO.	STATE	PROJECT NO.	FISCAL YEAR	SHEET NO.	TOTAL SHEETS
5	IND.	RS-3983(2)		1	23

INDEX					
PROJECT	STRUCTURE	TYPE	SPAN	OVER	STATION
RS-3983(2)	71-83-5836A	BRIDGE DECK RECONSTRUCTION AND OVERLAY	4 SPANS : 49'-9"; 50'-6"; 50'-6"; 49'-9"	LITTLE VERMILLION RIVER	
SHEET NO.	SHEET DESIGNATION	SUBJECT			F. H. W. A. APPROVAL
1	ONE SHEET	INDEX AND TITLE SHEET			
2	ONE SHEET	TRAFFIC MAINTENANCE DETAILS			
3	R1	GENERAL PLAN			
4	R2	NOTES AND DETAILS			
5	R3	RAILING DETAILS			
6	R4	GUARDRAIL TRANSITION TYPE WGB			

BRIDGE PLANS  
FOR SPANS OVER 20 FEET  
ON  
STATE ROAD NO. 71

PROJECT NO. RS-3983 (2) P.E.  
(2) R/W  
(2) CONST.

THIS STRUCTURE IS LOCATED ON STATE ROAD NO. 71 OVER LITTLE VERMILLION RIVER APPROXIMATELY 6.5 MILES NORTH OF U.S. ROUTE NO. 36 IN SECTION 30, T-17-N, R-9-W, VERMILLION TOWNSHIP, VERMILLION COUNTY, INDIANA.

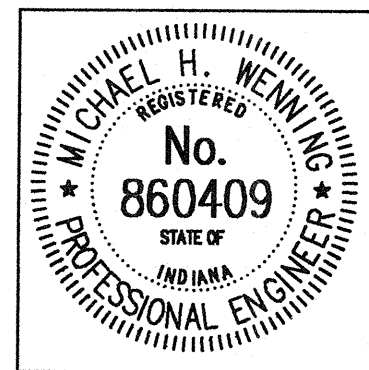


TRAFFIC DATA			
A. D. T. (1990)		500	V.P.D.
A. D. T. (19 PROJECTED)			V.P.D.
D. H. V. (19 PROJECTED)			V.P.H.
TRUCKS		D.H.V. %	A.D.T. %
DESIGN SPEED		55	M.P.H.
ACCESS CONTROL		None	
FUNCTIONAL CLASSIFICATION		Rural Major Collector	

INDEX CONTINUED STANDARD DRAWINGS					
SHEET NO.	SHEET DESIGNATION	SUBJECT	F. H. W. A. APPROVAL	ADOPTED "A" REVISION "R"	
7	BRIDGE STD. BR5	RAILING CONNECTION DETAILS			
	BRIDGE STD. C1	MISCELLANEOUS DETAILS	PENDING	R 10-01-91	
	BRIDGE STD. C2	MISCELLANEOUS DETAILS			
	BRIDGE STD. C3	MISCELLANEOUS DETAILS			
	BRIDGE STD. C4	MISCELLANEOUS DETAILS			
	BRIDGE STD. C5	PRECAST DECK PANEL DETAILS			
	BRIDGE STD. D	CASTING DETAILS, ROADWAY DRAINS			
	BRIDGE STD. D1	ADJUSTING FRAME DETAILS FOR ROADWAY DRAINS			
	BRIDGE STD.				
	BRIDGE STD. PB	PRESTRESSED CONCRETE, TYPE I-BEAMS			
	BRIDGE STD. PB	PRESTRESSED CONCRETE, TYPE I-BEAMS			
	BRIDGE STD. PB6	PRESTRESSED BOX BEAMS			
	BRIDGE STD. PB	PRESTRESSED COMPOSITE BOX BEAMS, WIDE			
	BRIDGE STD. PB	PRESTRESSED COMPOSITE BOX BEAMS, WIDE			
	BRIDGE STD. PB10	TOLERANCES FOR FABRICATION OF PRESTRESSED BEAMS			
	BRIDGE STD. PB11	ELASTOMERIC BEARING PAD DETAILS			
	BRIDGE STD.				
	BRIDGE STD. R2A	BRIDGE LIGHTING DETAILS			
	BRIDGE STD. R2B	BRIDGE LIGHTING DETAILS			
	BRIDGE STD. S1	MISCELLANEOUS DETAILS			
	BRIDGE STD. SH1	STEEL SHOE DETAILS			
	BRIDGE STD. SS1	STRUCTURAL EXPANSION JOINTS CLASS SS, SHEET 1			
	BRIDGE STD. SS2	STRUCTURAL EXPANSION JOINTS CLASS SS, SHEET 2			
BRIDGE STD. T SHEET A	STANDARD TEMPORARY BRIDGE				
BRIDGE STD. T SHEET B	STANDARD TEMPORARY BRIDGE				
BRIDGE STD.					
BRIDGE STD.					
BRIDGE STD.					
ROAD STD. SHEET A	STANDARD PAVEMENT JOINTS				
ROAD STD. SHEET B	STANDARD PAVEMENT JOINTS				
ROAD STD. SHEET MA	MISCELLANEOUS STANDARDS				
ROAD STD. SHEET	MISCELLANEOUS STANDARDS				
ROAD STD. SHEET	MISCELLANEOUS STANDARDS				
ROAD STD. SHEET MB2	MISCELLANEOUS STANDARDS				
ROAD STD. SHEET	MISCELLANEOUS STANDARDS				
ROAD STD. SHEET	MISCELLANEOUS STANDARDS				
ROAD STD. SHEET MC2	MISCELLANEOUS STANDARDS				
ROAD STD. SHEET	MISCELLANEOUS STANDARDS				
ROAD STD. SHEET	MISCELLANEOUS STANDARDS				
ROAD STD. SHEET ME	MISCELLANEOUS STANDARDS				
ROAD STD. SHEET	MISCELLANEOUS STANDARDS				
ROAD STD. SHEET MH	MISCELLANEOUS STANDARDS				
ROAD STD. SHEET MH1	MISCELLANEOUS STANDARDS				
ROAD STD. SHEET MH2	MISCELLANEOUS STANDARDS				
ROAD STD. SHEET MH2A	MISCELLANEOUS STANDARDS				
ROAD STD. SHEET	MISCELLANEOUS STANDARDS				
ROAD STD. SHEET	MISCELLANEOUS STANDARDS				
ROAD STD. SHEET MN	MISCELLANEOUS STANDARDS				
ROAD STD. SHEET MN1	MISCELLANEOUS STANDARDS				
ROAD STD. SHEET MT3	MISCELLANEOUS STANDARDS		9-05-88	R 8-01-88	
ROAD STD. SHEET MT7	MISCELLANEOUS STANDARDS		7-19-83	R 5-02-83	
ROAD STD. SHEET	MISCELLANEOUS STANDARDS				
10	GUARDRAIL SHEET G-1	W-BEAM GUARDRAIL COMPONENTS	PENDING	A 12-13-91	
11	GUARDRAIL SHEET G-2	THREE-BEAM GUARDRAIL COMPONENTS	PENDING	A 12-13-91	
12	GUARDRAIL SHEET G-3	W-BEAM GUARDRAIL ASSEMBLIES	PENDING	A 12-13-91	
13	GUARDRAIL SHEET B-1	TYPICAL BRIDGE APPROACH GUARDRAIL	PENDING	A 12-13-91	
14	GUARDRAIL SHEET E-1	GUARDRAIL END TREATMENT TYPE I	PENDING	A 12-13-91	
	GUARDRAIL SHEET E-2	GUARDRAIL END TREATMENT TYPE OS			
	GUARDRAIL SHEET E-3	GUARDRAIL END TREATMENT TYPE MS			
15	GUARDRAIL SHEET T-1	GUARDRAIL TRANSITION TYPE GB	PENDING	A 12-13-91	
	GUARDRAIL SHEET T-2	GUARDRAIL TRANSITION TYPE GP			
	GUARDRAIL SHEET T-3	GUARDRAIL TRANSITION TYPE VH			
	GUARDRAIL SHEET T-4	PIER CONNECTION DETAILS			
16	ROAD STD. SHEET GR10B	W-BEAM GUARD RAIL TERMINAL SECTION	PENDING	R 4-04-88	
	ROAD STD. SHEET CB1	CONCRETE MEDIAN BARRIER			
17	ROAD STD. SHEET CB2	TEMPORARY CONCRETE BARRIER	1-11-89	R 9-01-88	
18	ROAD STD. SHEET 1 DETOURS	STANDARD DETOUR SIGNS	PENDING	A Sept., 1988	
	ROAD STD. SHEET 1A DETOURS	STANDARD DETOUR SIGNS			
	ROAD STD. SHEET 1B DETOURS	STANDARD DETOUR SIGNS			
	ROAD STD. SHEET 2 DETOURS	STANDARD DETOUR SIGNS			
19	ROAD STD. SHEET 2A DETOURS	STANDARD DETOUR SIGNS	PENDING	A Sept., 1988	
20	ROAD STD. SHEET 3 DETOURS	STANDARD DETOUR SIGNS	PENDING	R 9-01-88	
21	ROAD STD. SHEET 3A DETOURS	STANDARD DETOUR SIGNS	PENDING	R 9-01-88	
22	ROAD STD. SHEET 4 DETOURS	STANDARD DETOUR SIGNS	1-11-89	R 9-01-88	
23	ROAD STD. SHEET 5 DETOURS	STANDARD DETOUR SIGNS	PENDING	R 9-01-88	
	ROAD STD. SHEET 5A DETOURS	STANDARD DETOUR SIGNS			

PLANS PREPARED BY:  
**AMERICAN CONSULTING ENGINEERS, INC.**

CERTIFIED BY *Michael H. Weir* *Feb. 19, 1992*  
DATE

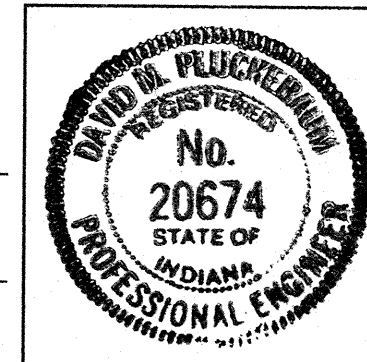


RECOMMENDED FOR APPROVAL *3-17-92*  
*James C. King*  
BRIDGE REHABILITATION ENGINEER, INDOT



APPROVED *3-17-92*  
*Ray Z. Kumb*  
CHIEF, DIVISION OF DESIGN

RECOMMENDED FOR APPROVAL *3-17-92*  
*Don Bell*  
DESIGN CONSULTANT SERVICES ENGINEER, INDOT



FEDERAL HIGHWAY ADMINISTRATION  
DEPARTMENT OF TRANSPORTATION  
APPROVED: -  
DIVISION ADMINISTRATOR DATE

BRIDGE FILE: - 71-83-5836A

REVISIONS	
DATE	SHEET NO.

REVISIONS	
DATE	SHEET NO.

INDIANA DEPARTMENT OF HIGHWAYS  
STANDARD SPECIFICATIONS DATED 1988  
TO BE USED WITH THESE PLANS.  
DES. NO. 16705

DES. FILE: V181233875  
PLOT SCALE: 1"=100'  
CHECKED: DC

PROF. FILE: 02/10/92  
DATE: 02/10/92  
DATE: 02/10/92

No Change

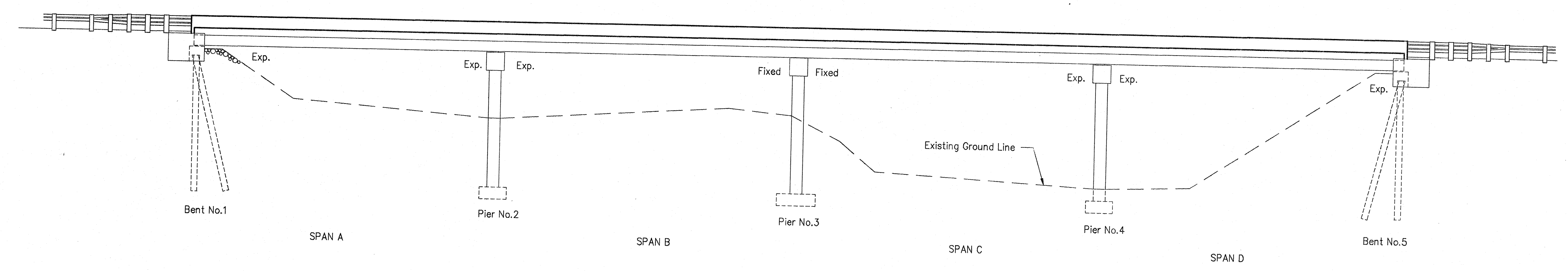




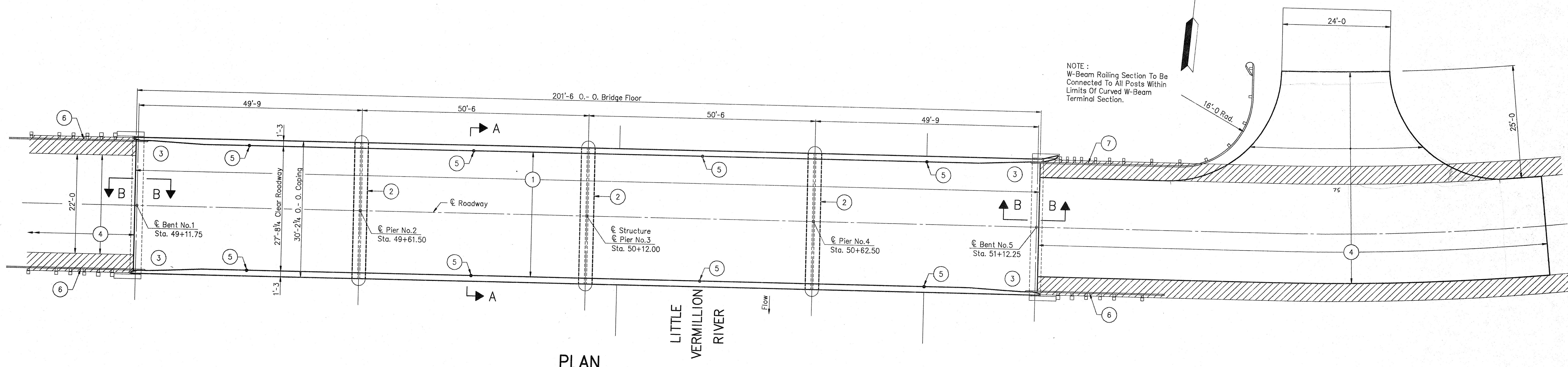


No Change

STRUCTURE BUILT TO A +0.247% GRADE



ELEVATION



PLAN

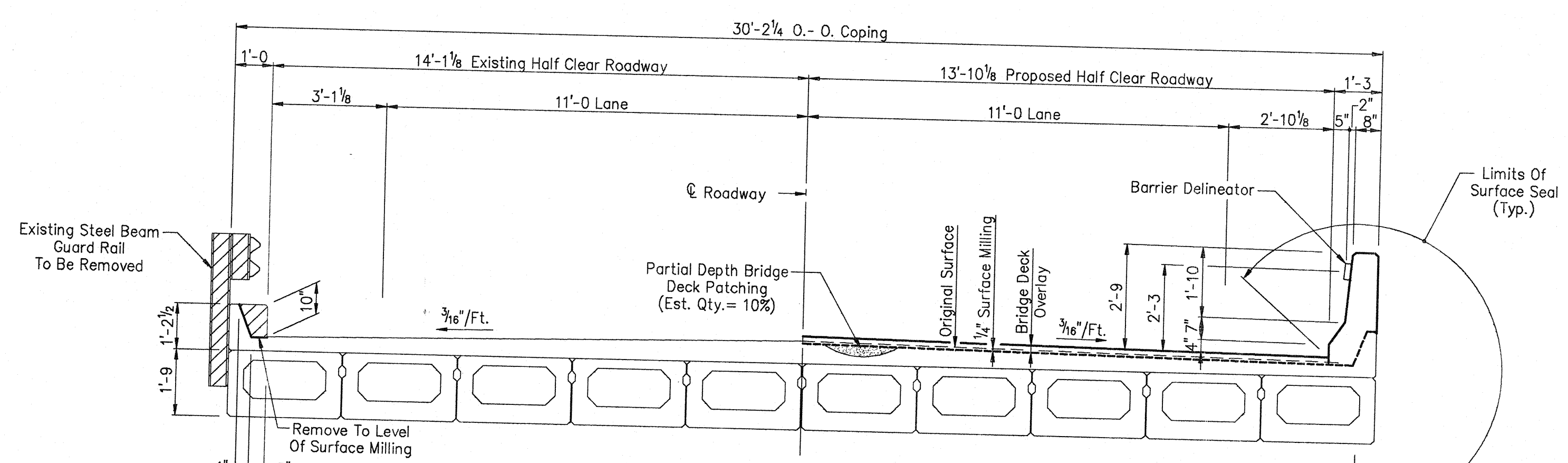
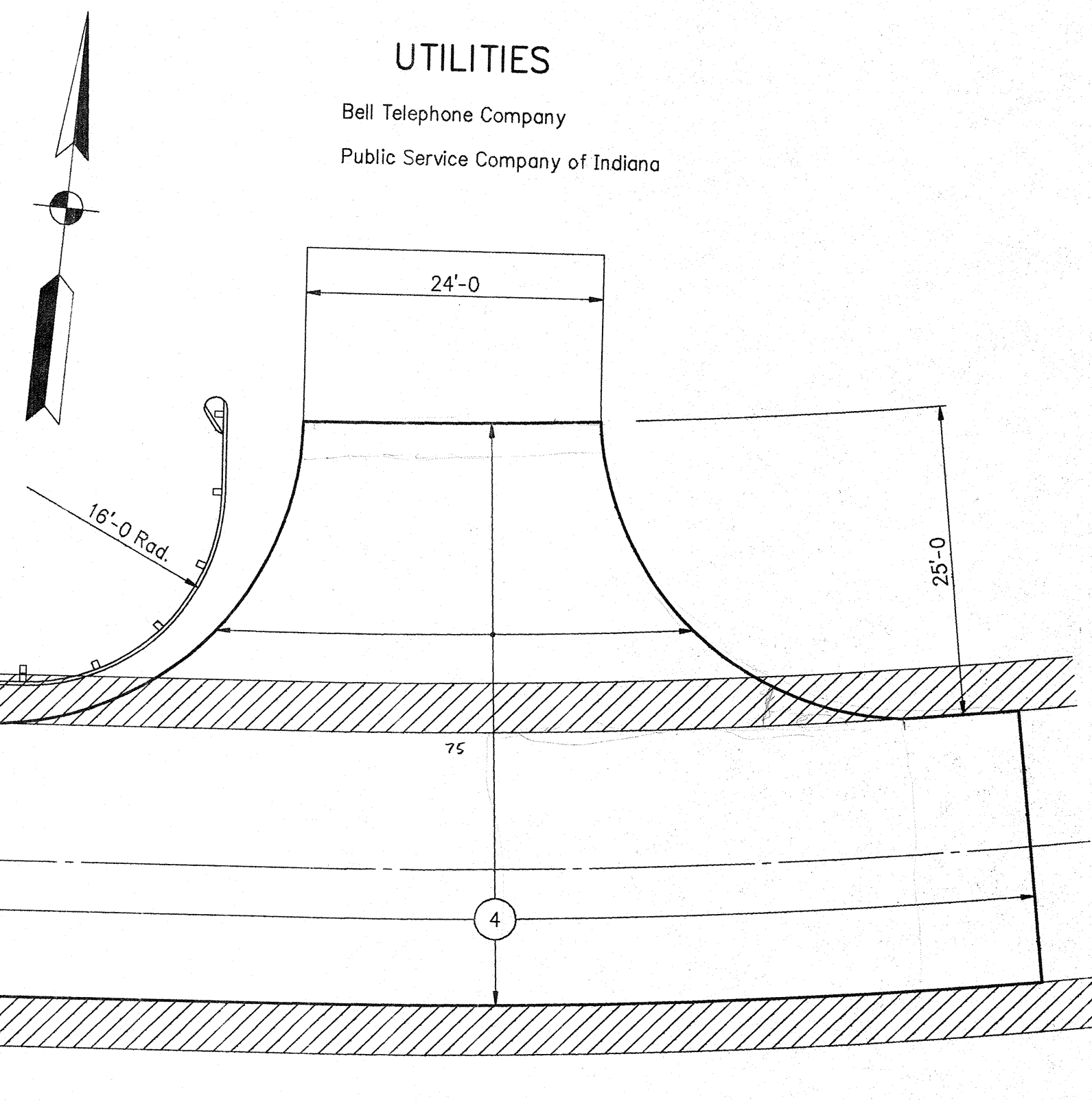
LITTLE VERMILLION RIVER

- LEGEND**
- 1 Limits Of 1/2" Surface Milling And Bridge Deck Overlay.
  - 2 Remove 3'-0" Of Existing Bridge Deck To Top Of Box Beams And Entire Diaphragm. See Detail On Drawing R2.
  - 3 Construct Modified Bridge Railing Transition.
  - 4 Construct 120' Bituminous Wedge.
  - 5 Construct Drain Scupper At Location Of Existing Drains. See Detail On Drawing R2.
  - 6 Remove 37.5 Lft. Of Existing Guard Rail And Install GB Transition, 75 Lft. Of Guard Rail @ 6'-3" Post Spacing And Guard Rail End Treatment, Type I.
  - 7 Remove 69 Lft. Of Existing Guard Rail And Install WGB Transition And Special W-Beam Guard Rail Terminal Section.

**UTILITIES**

Bell Telephone Company  
Public Service Company of Indiana

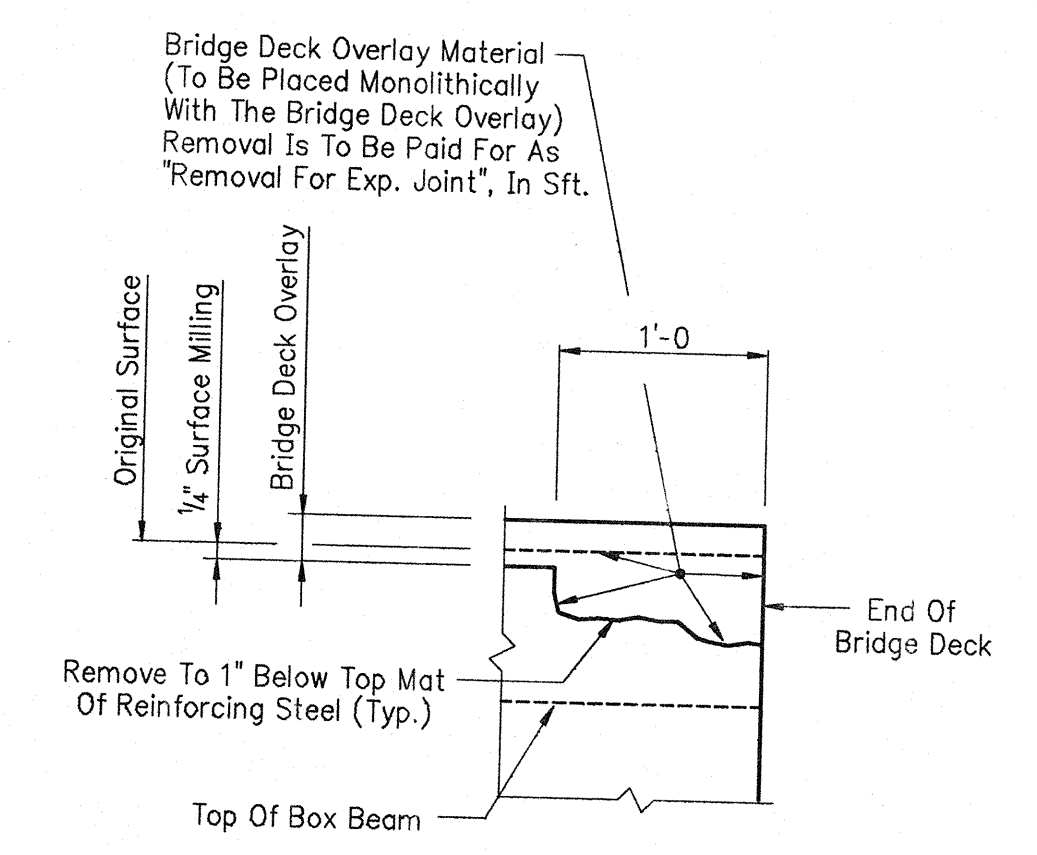
NOTE :  
W-Beam Railing Section To Be Connected To All Posts Within Limits Of Curved W-Beam Terminal Section.



SECTION A-A

This Half Showing Existing      This Half Showing Proposed

Scale: 3/8" = 1'-0"



SECTION B-B

Scale: 1" = 1'-0"

NOTES:  
For General Notes, Standard Drawings and additional details, see Drawing R2.  
The Obstruction Free Zone is 10' from the edge of pavement.

**GENERAL PLAN**  
**BRIDGE DECK RECONSTRUCTION AND OVERLAY**  
PRESTRESSED CONCRETE BOX BEAM BRIDGE  
4 SPANS: 49'-9", 2 @ 50'-6", 49'-9" 27'-8 1/4" CLEAR ROADWAY  
S.R. 71 OVER LITTLE VERMILLION RIVER

**INDIANA DEPARTMENT OF TRANSPORTATION**  
**VERMILLION COUNTY**

SCALE: - 3/32" = 1'-0" UNLESS NOTED      DATE: - FEBRUARY 19, 1992

SUBMITTED FOR APPROVAL *Michael Williams*

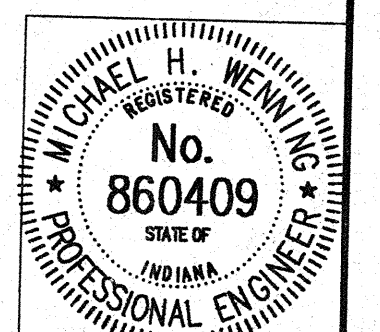
DRAWING: - R1 OF R4      SHEET: - 3 OF 23

PROJECT: - RS-3983(2)

CONTRACT NO. B-20137

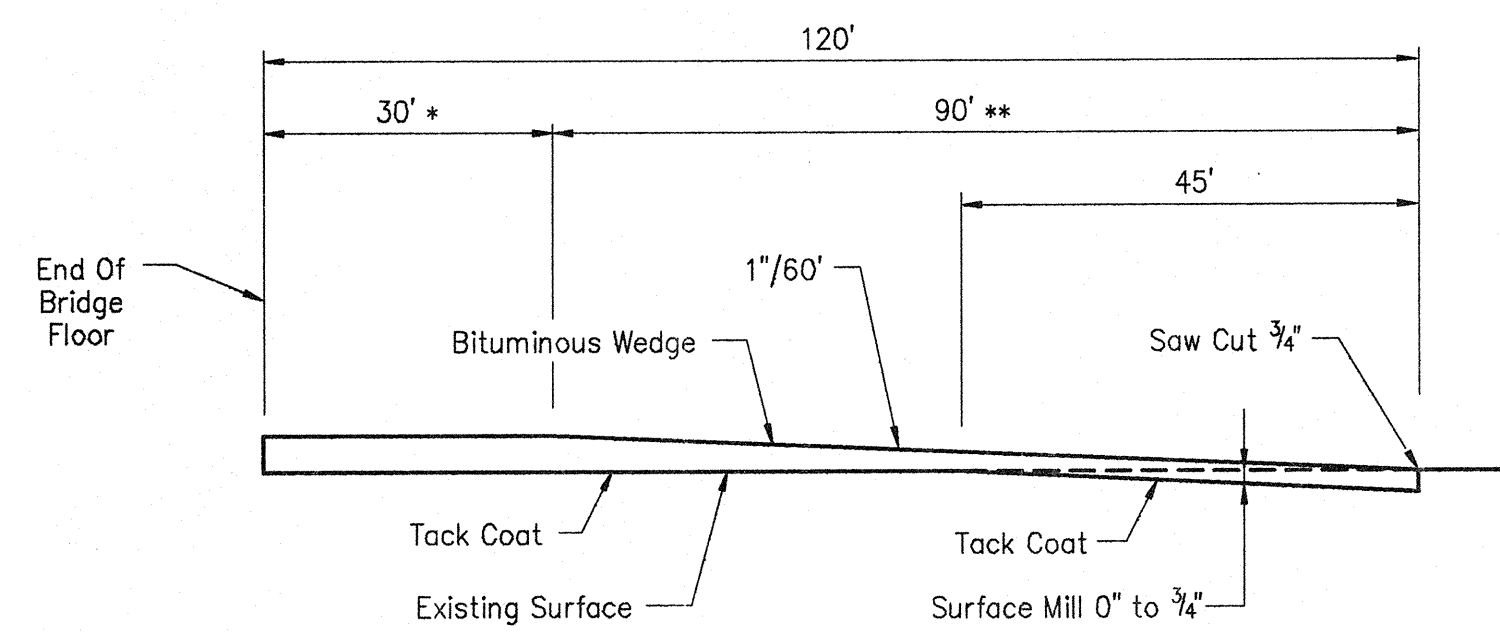
BRIDGE FILE: - 71-83-5836A

DESIGNED: CK'D  
DRAWN: DDG 5/10/91 CK'D MHW 12/17/91  
TRACED: CK'D



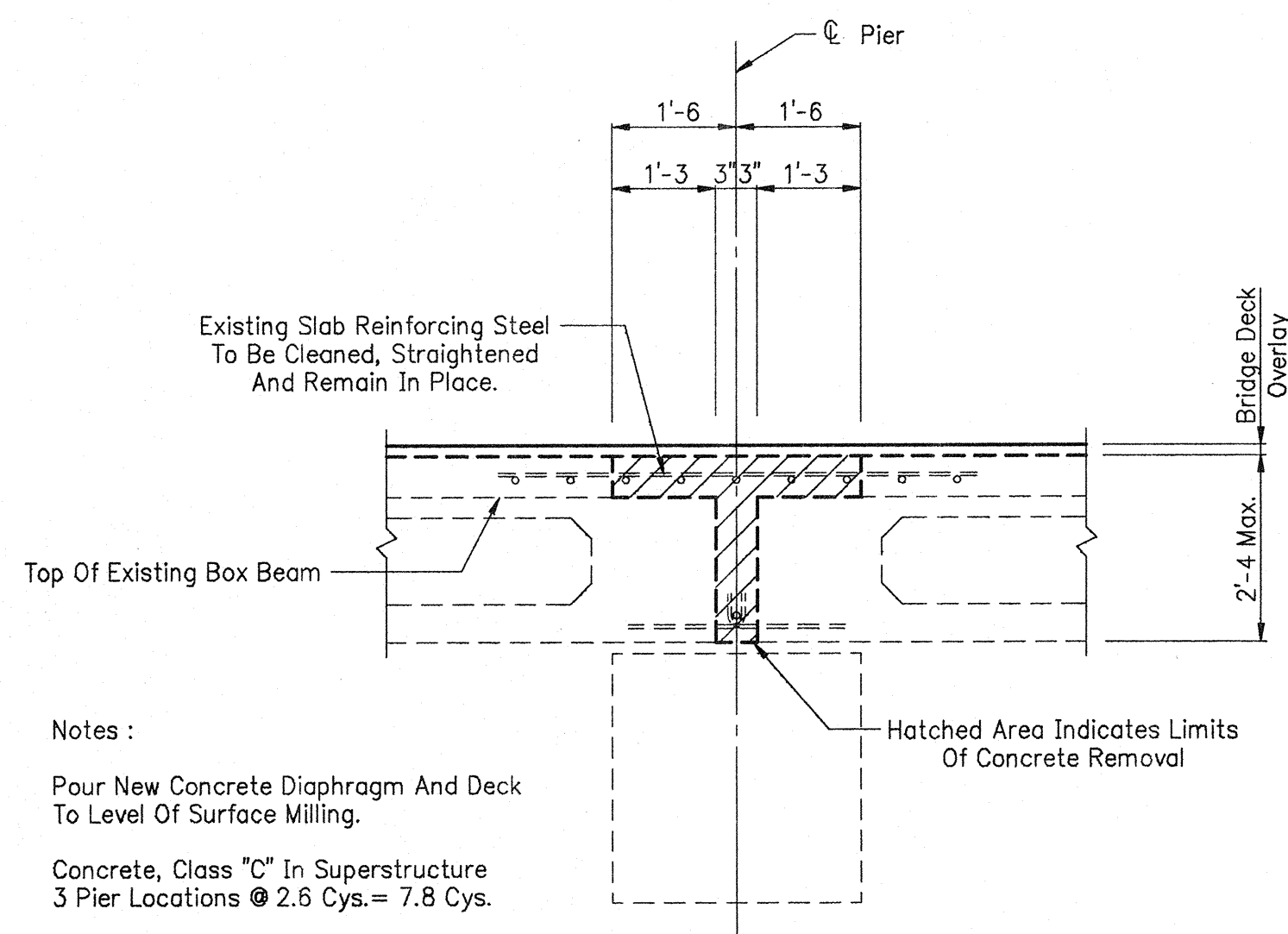
No Change

No Change



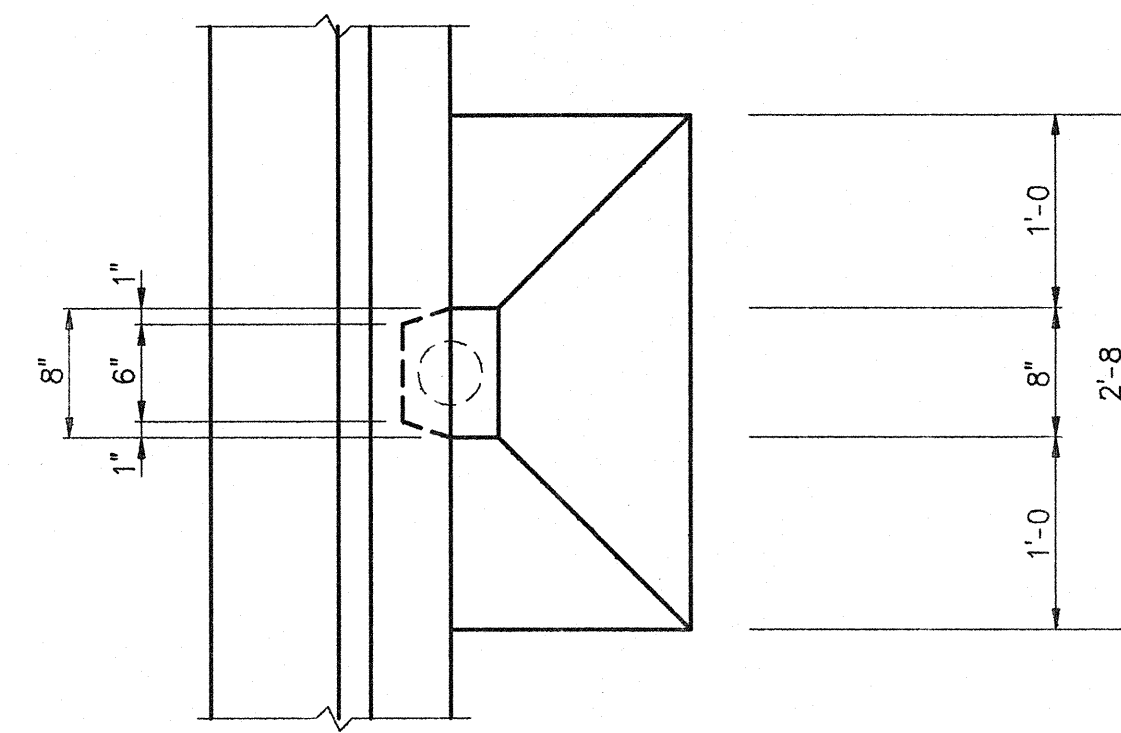
\* Wedge to be a continuation of bridge deck profile.  
 \*\* Taper wedge uniformly to meet existing roadway surface.

**TYPICAL WEDGE DETAIL**  
 No Scale

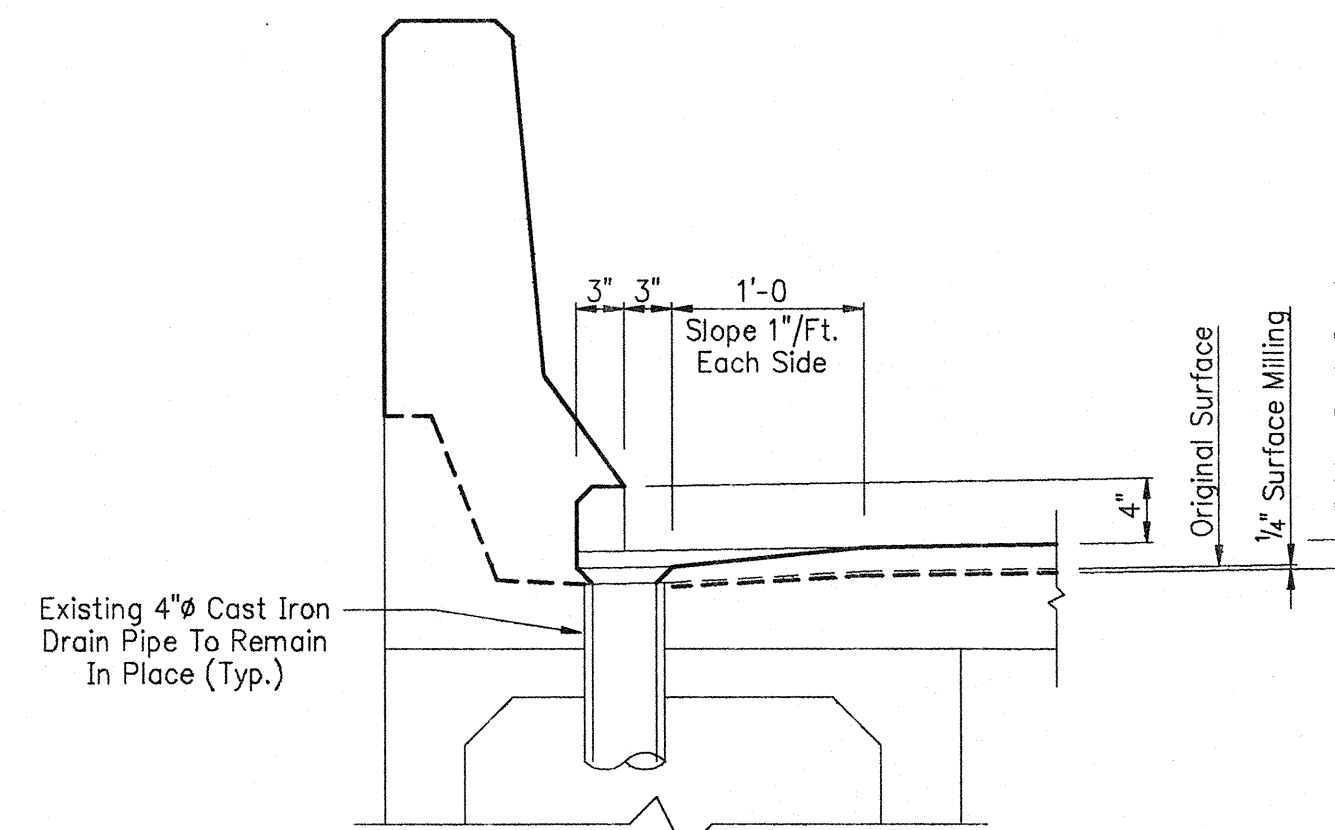


Notes :  
 Pour New Concrete Diaphragm And Deck To Level Of Surface Milling.  
 Concrete, Class "C" In Superstructure  
 3 Pier Locations @ 2.5 Cys. = 7.8 Cys.

**DIAPHRAGM DETAILS**  
 Scale- 1/2" = 1'-0"



PLAN



SECTION

**DRAIN SCUPPER DETAILS**  
 Scale- 1" = 1'-0"

**GENERAL NOTES**

Plans of the existing structure are on file in the Bridge Department, Indiana Department of Transportation, as Bridge No. 71-B3-5836.

Where new work is to be fitted to old work, the contractor shall check all dimensions and conditions in the field, and report any errors or discrepancies to the engineer and assume responsibility for their correctness and fit of the new part to the old.

The handchipping and cleaning of the deteriorated deck areas shall be as directed by the engineer. It is the intent of these plans that all such deteriorated concrete be removed and should there be any doubt as to the quality of the concrete, removal shall continue until PERFECTLY SOUND CONCRETE is exposed. All existing non-full depth patching is to be removed.

All bituminous materials required in the contract to be included in the pay item "Bituminous Mixture For Approaches, L.V.", except for tack coat which is to be paid for as "Bituminous Material For Tack Coat" in Sys.

Reinforcing steel covering to be 2", unless noted.

Continuous concrete pours shall be required between construction joints as shown in the detail plans.

Seal all joints and cracks in the approach pavement within the limits of the bituminous wedges with a joint sealer before placing the bituminous wedge.

Chamfer exposed edges 1", unless noted.

Concrete in deck, diaphragm and railing to be Class "C".

Length and quantities of the bituminous wedge shown in the plans are based on the use of Modified Portland Cement Concrete overlay (1 1/4"). See the Special Provisions.

For concrete removal equipment, see Article 202.03(b) of the Specifications.

Barrier delineators on the structure shall be placed at the interior end of railings and at 20 feet spacing (maximum) thereafter. The color of the reflectors shall match the adjacent lane edge line.

Embed bar in field drilled holes in concrete with approved anchor system.

Paint lane lines and double yellow centerlines within project limits upon completion of the project.

**STANDARD DRAWINGS**

BRIDGE STANDARD	ROAD STANDARD	DESCRIPTION
C1		Reinforcing Bar Notes
	MT3	Traffic Sign Details
	MT7	Controller Mounted On Wood Poles
	GR10B	W-Beam Terminal Section
	G-1	W-Beam Guard Rail
	G-2	Thrie-Beam Guard Rail
	G-3	W-Beam Guard Rail
	B-1	Bridge Approach Guard Rail
	E-1	G.R.E.T. Type 1
	T-1	Guard Rail Transition Type GB
	CB2	Temporary Concrete Barrier
	Detours 1, 2A, 3, 3A, 4 & 5	Standard Detour Signs

**MATERIAL NOTES**

BRIDGE DECK OVERLAY : 1 3/4" Modified Portland Cement Concrete Or 2 1/4" Dense Portland Cement Concrete (1 1/2" Or 2" Respectively Above Original Surface)  
 BITUMINOUS WEDGE : 110 Lbs./Sys. Bituminous Surface Type 11, LV Over Variable Depth Bituminous Binder, LV Or Base, LV  
 BITUMINOUS WIDENING : 990 Lbs./Sys. Bituminous Base Type 5D, LV

**NOTES AND DETAILS**

**INDIANA DEPARTMENT OF TRANSPORTATION**

SCALE: - NONE, UNLESS NOTED DATE: - FEBRUARY 19, 1992

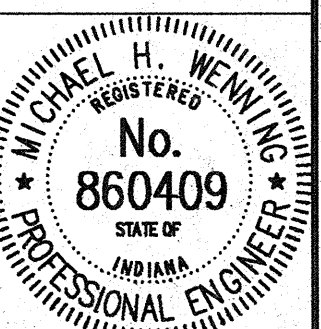
SUBMITTED FOR APPROVAL *Michael H. Weeny*

DRAWING: - R2 OF R4 SHEET: - 4 OF 23

PROJECT: - RS-3983(2)

CONTRACT NO. B-20137

BRIDGE FILE: - 71-83-5836A



DESIGNED: C.K'D  
 DRAWN: DSH 12/13/91 C.K'D MHW 12/17/91  
 TRACED: C.K'D

DWG FILE: \91\1913383 PROGFIL: 02/19/92  
 PLOT SCALE: 1:1 EDIT DATE: 02/19/92  
 PLOT ORIGIN: 0,0,0.00 EDITED BY: DSH  
 CHECKED: D

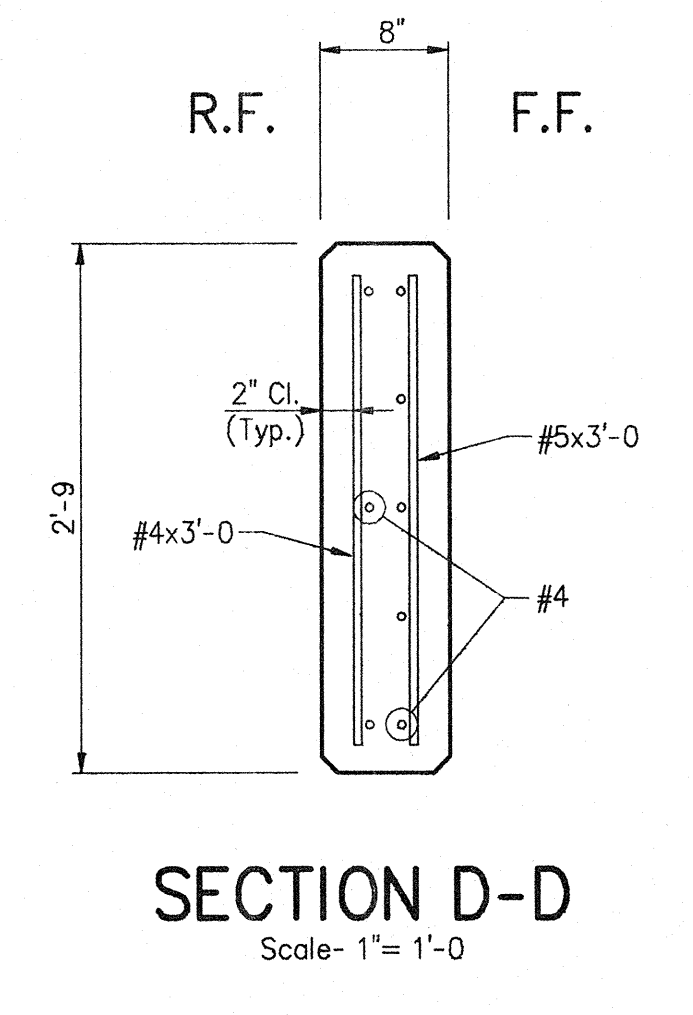
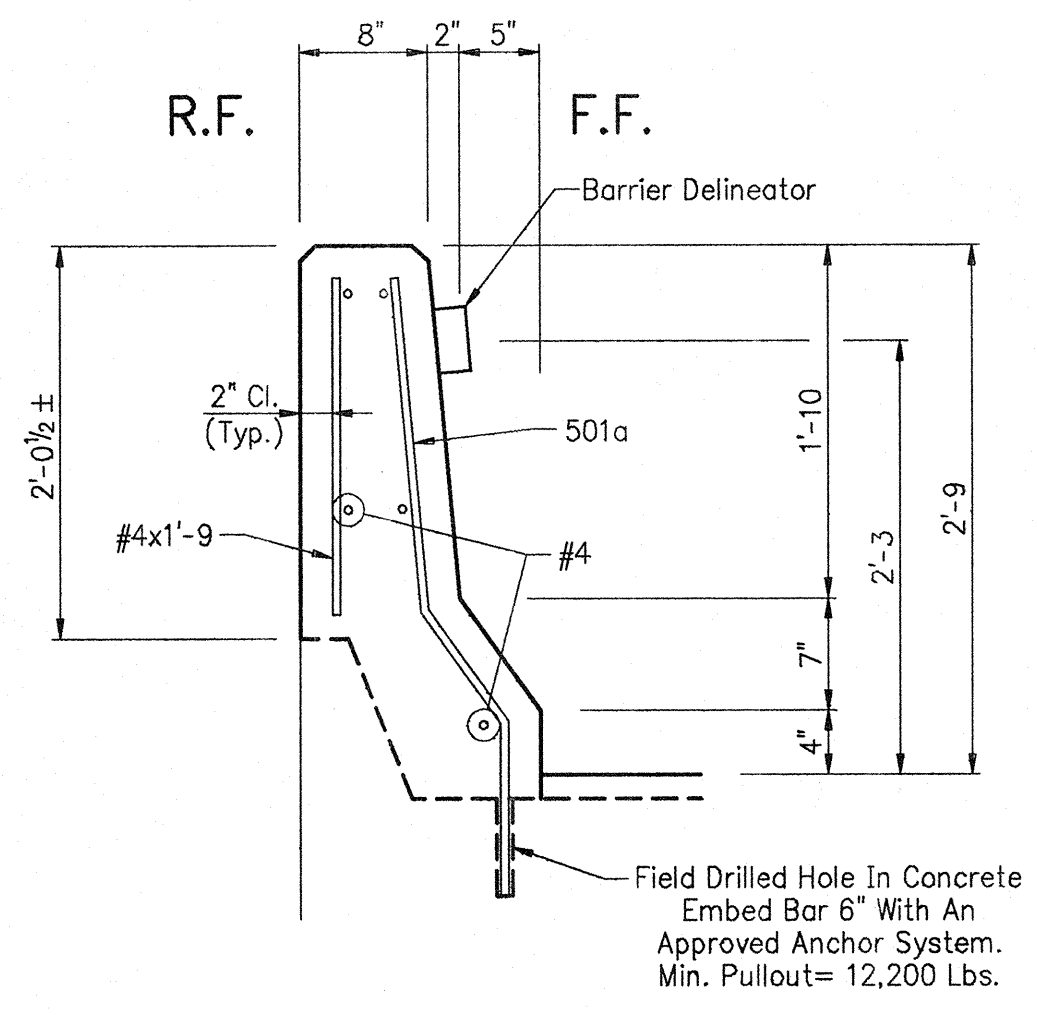
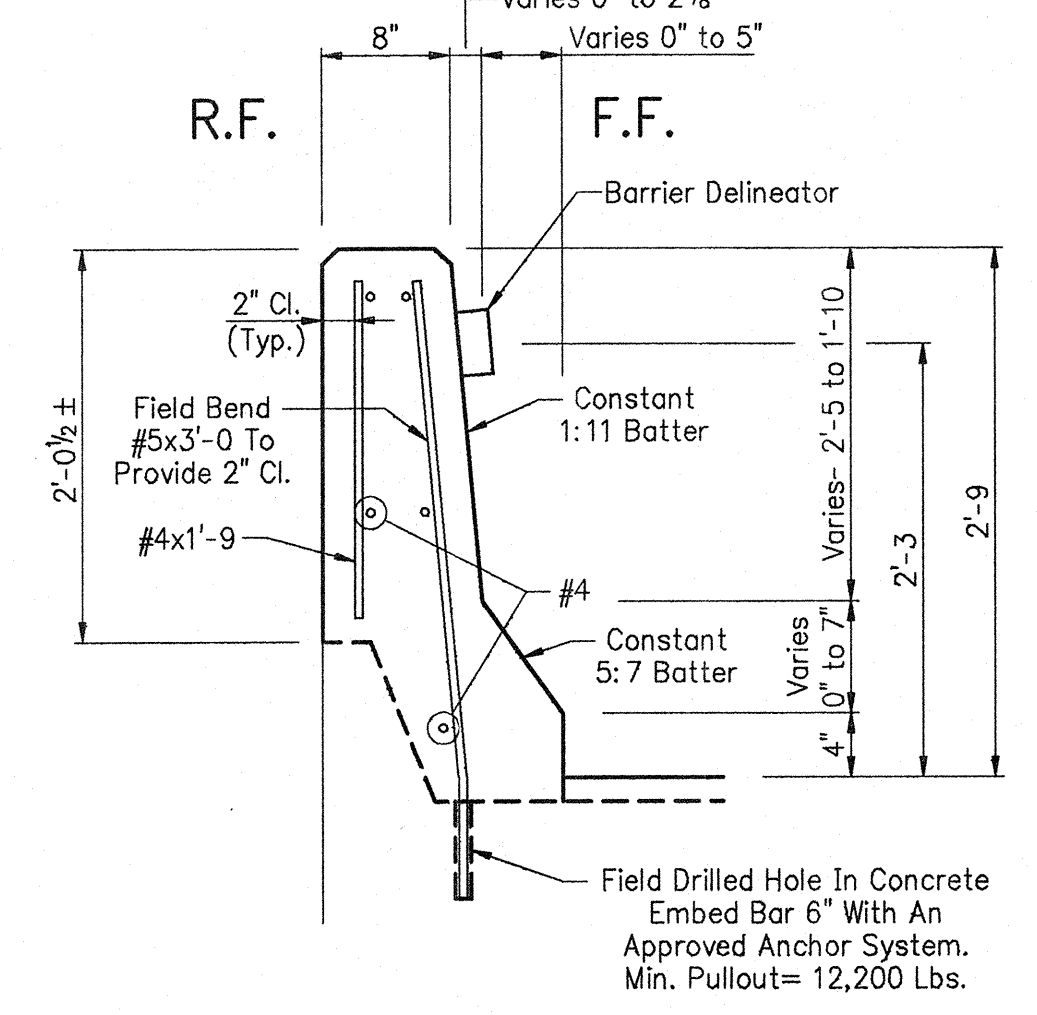
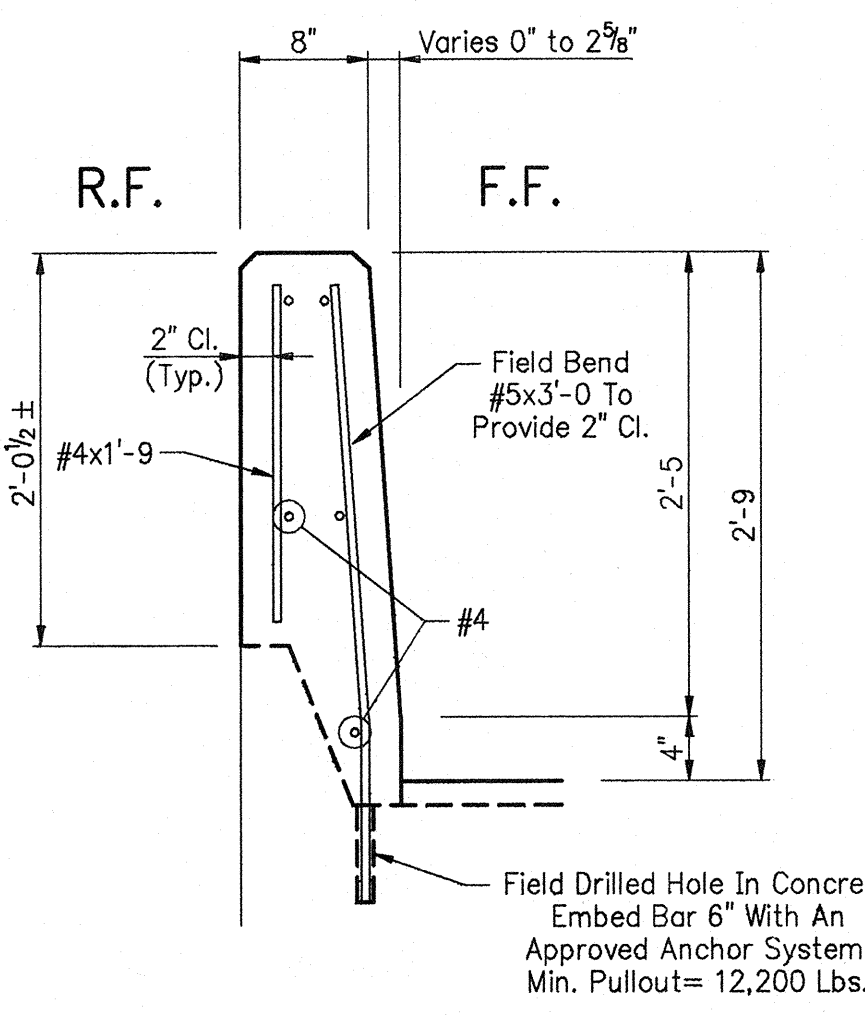
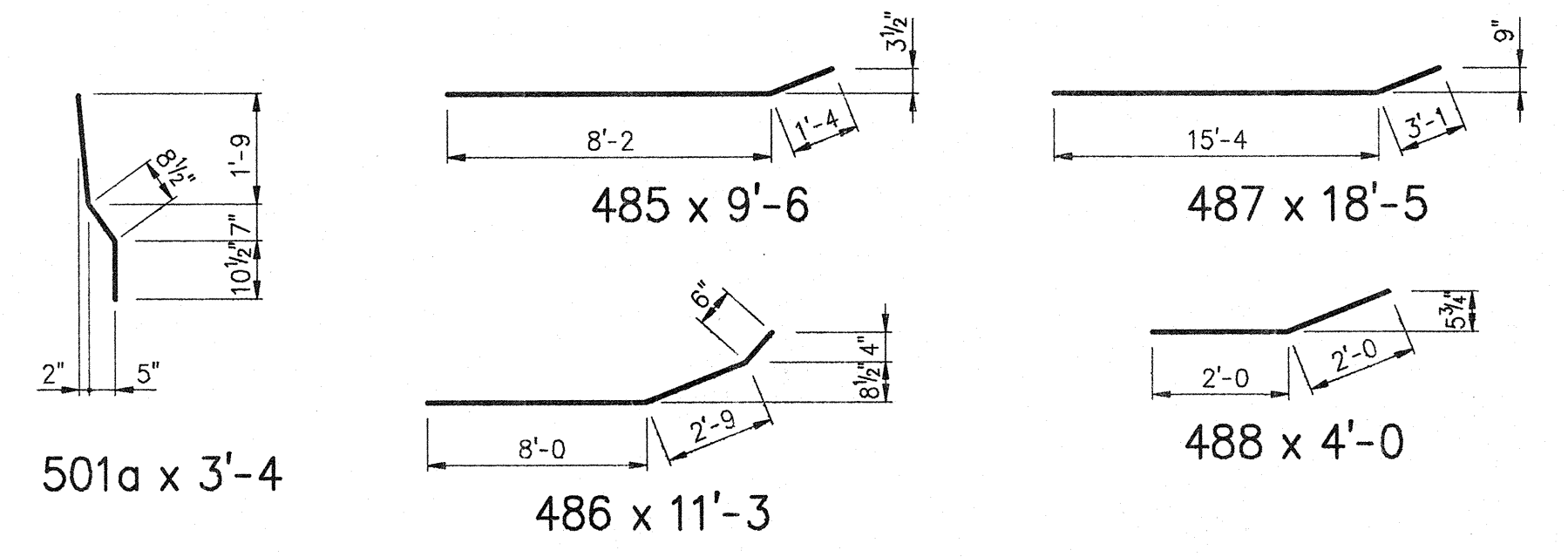
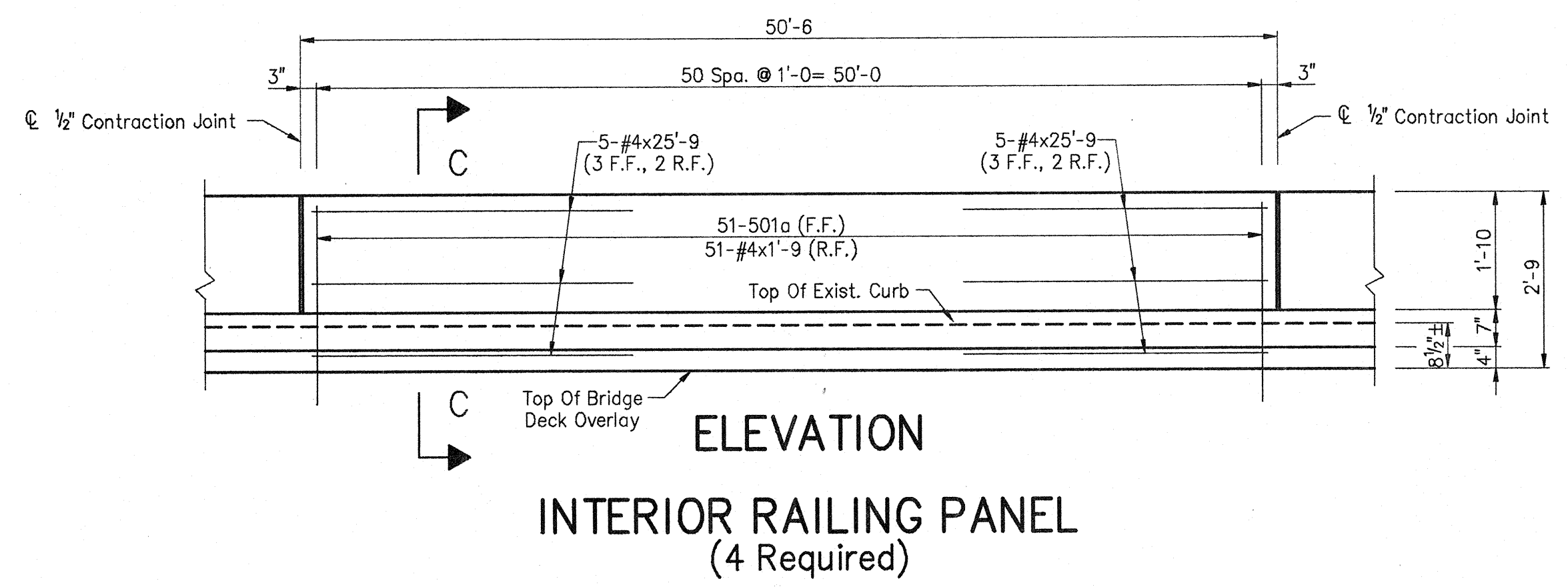
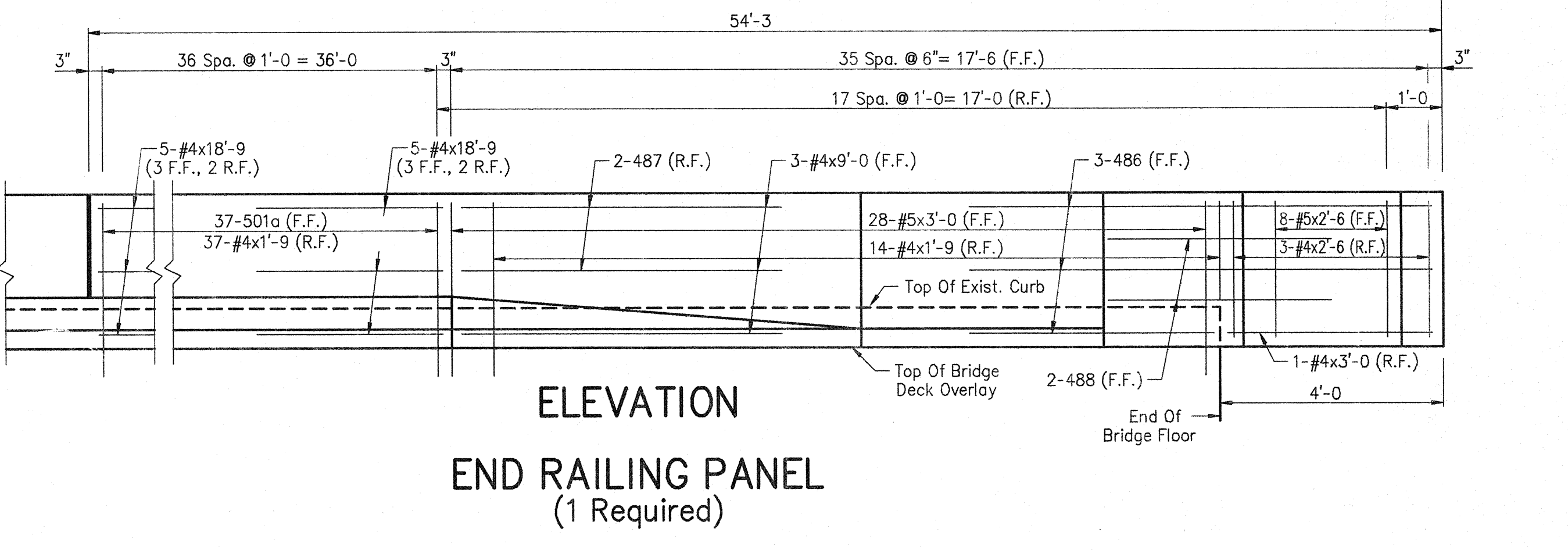
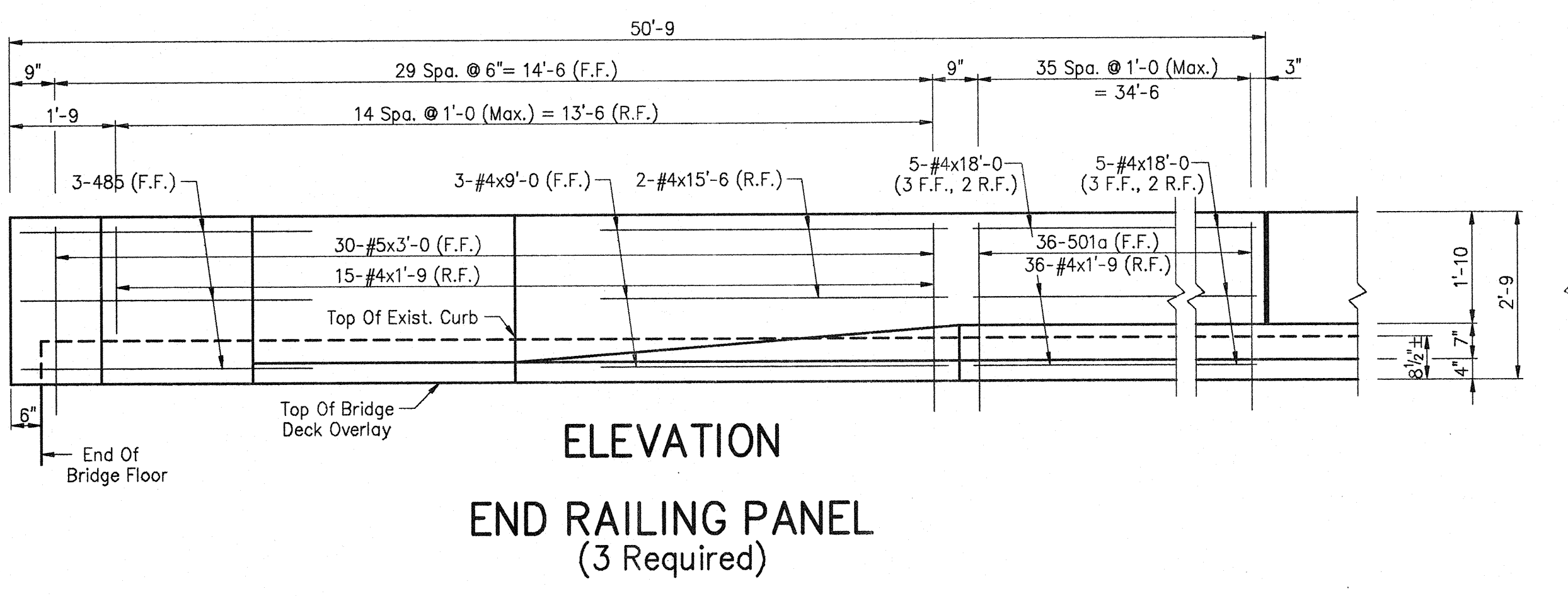
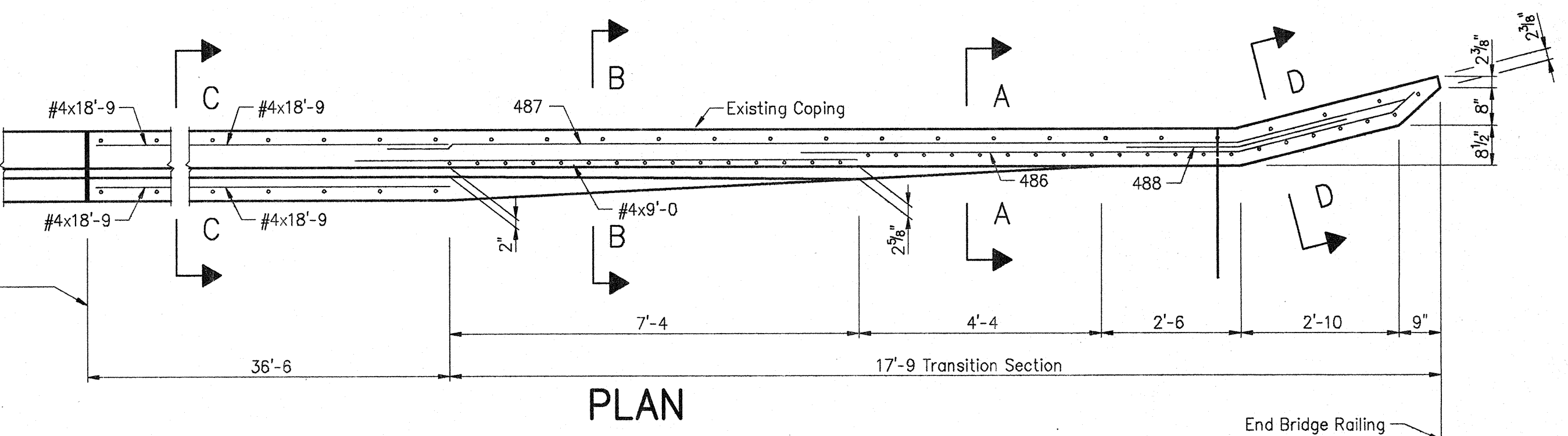
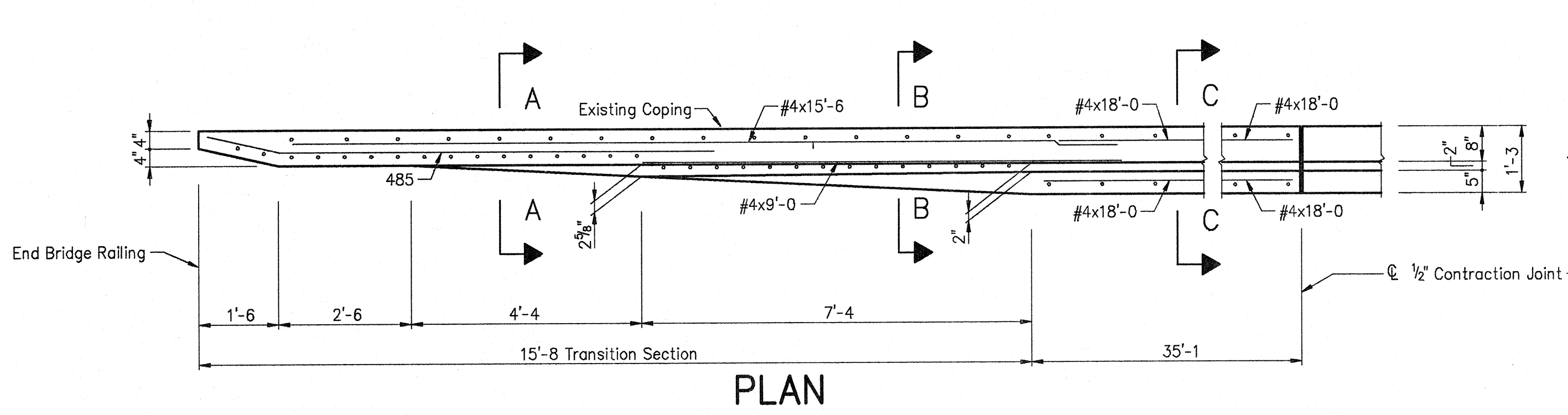
No Change



No Change

### BILL OF MATERIALS

Epoxy Coated Reinforcing Steel			
Size And Mark	No. Of Bars	Length (Feet)	Weight (Lbs.)
501a	349	3'-4	
#5	118	3'-0	
#5	8	2'-6	
Total No.5			1,603
485	9	9'-6	
486	3	11'-3	
487	2	18'-5	
488	2	4'-0	
#4	40	25'-9	
#4	10	18'-9	
#4	30	18'-0	
#4	6	15'-6	
#4	12	9'-0	
#4	1	3'-0	
#4	3	2'-6	
#4	408	1'-9	
Total No.4			1,902
Total Epoxy Coated Reinforcing Steel			3,505
Concrete			
Concrete Railing Class 'C'			408.5 Lft.
Miscellaneous			
Surface Seal			3,700 Sft.
Field Drilled Holes In Concrete			467 Each
Barrier Delineators			22 Each



NOTES:  
All reinforcing steel to be epoxy coated.  
For reinforcing bar notes, see Bridge Standard C1.

### RAILING DETAILS

## INDIANA DEPARTMENT OF TRANSPORTATION

SCALE: - 1/2" = 1'-0, UNLESS NOTED DATE: - FEBRUARY 19, 1992

SUBMITTED FOR APPROVAL *Michael W. ...*

DRAWING: - R3 OF R4 SHEET: - 5 OF 23

PROJECT: - RS-3983(2)

CONTRACT NO. 8-20137

BRIDGE FILE: - 71-83-5836A



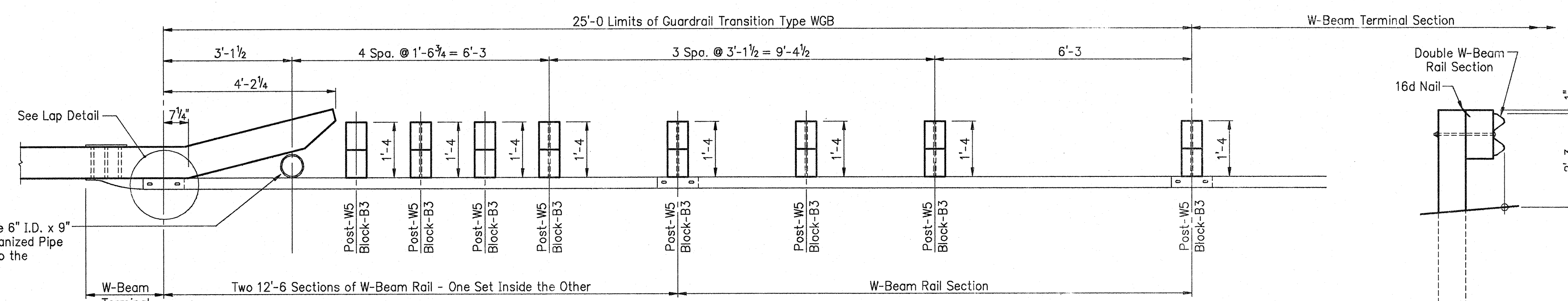
DESIGNED: DSH 12/16/91  
DRAWN: DSH 12/16/91  
TRACED: DSH 12/19/91

PROJECT: 02/16/92  
DATE: 02/16/92  
DRAWN: DSH

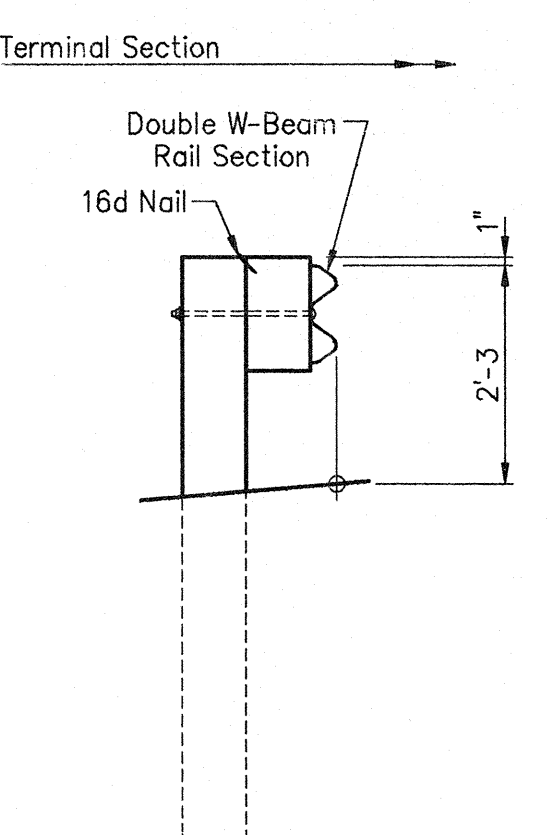
No Change



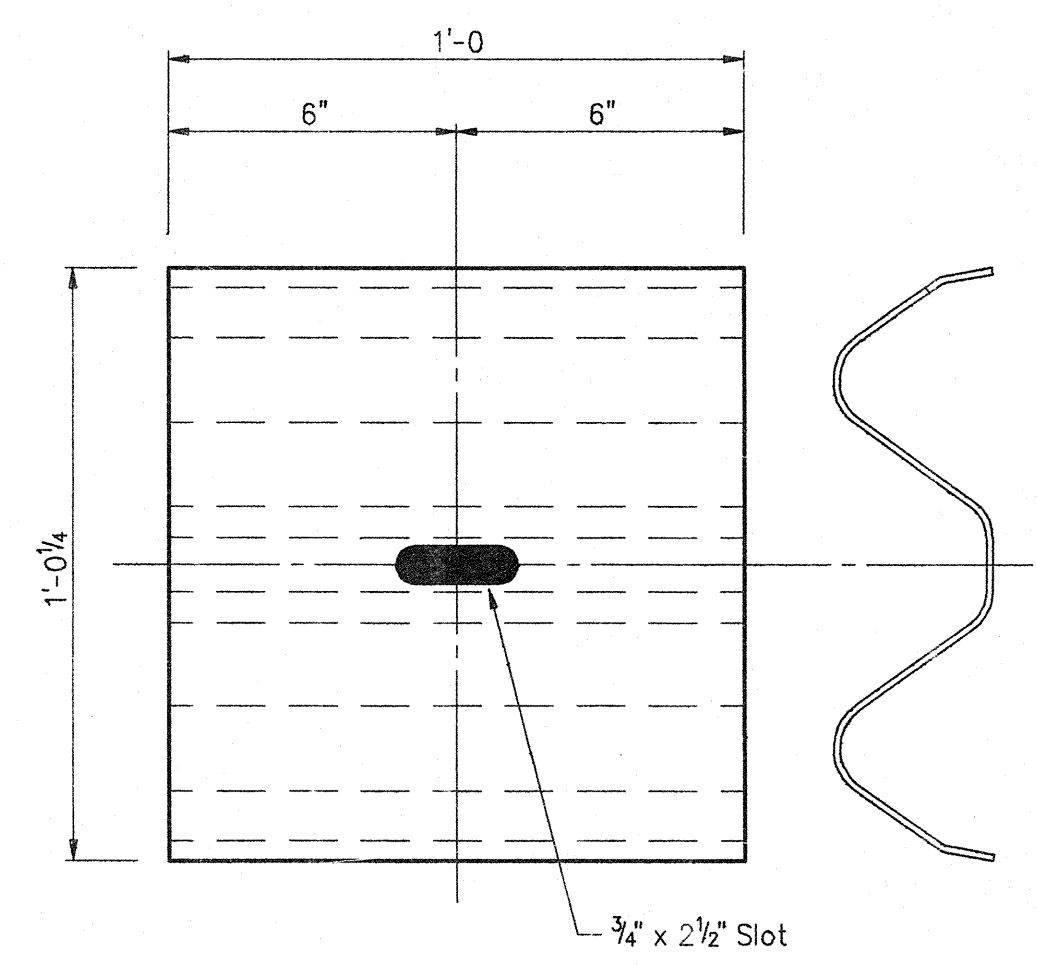
No Change



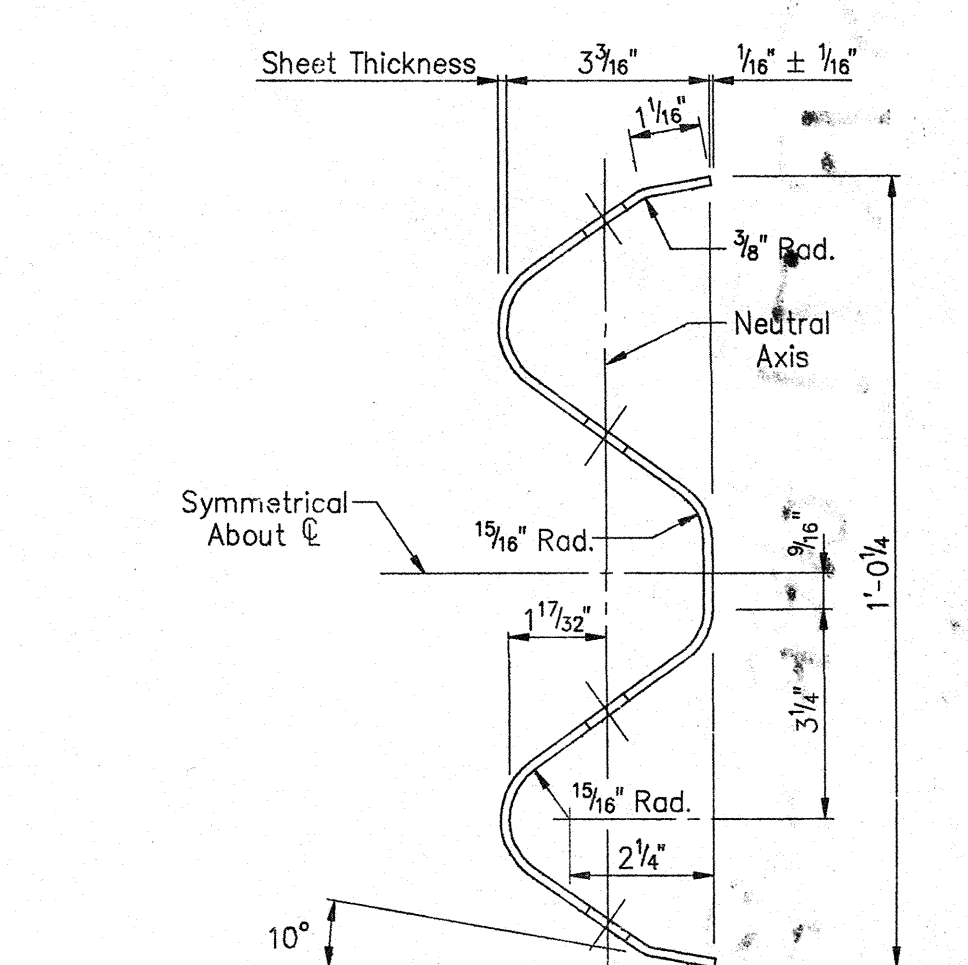
PLAN



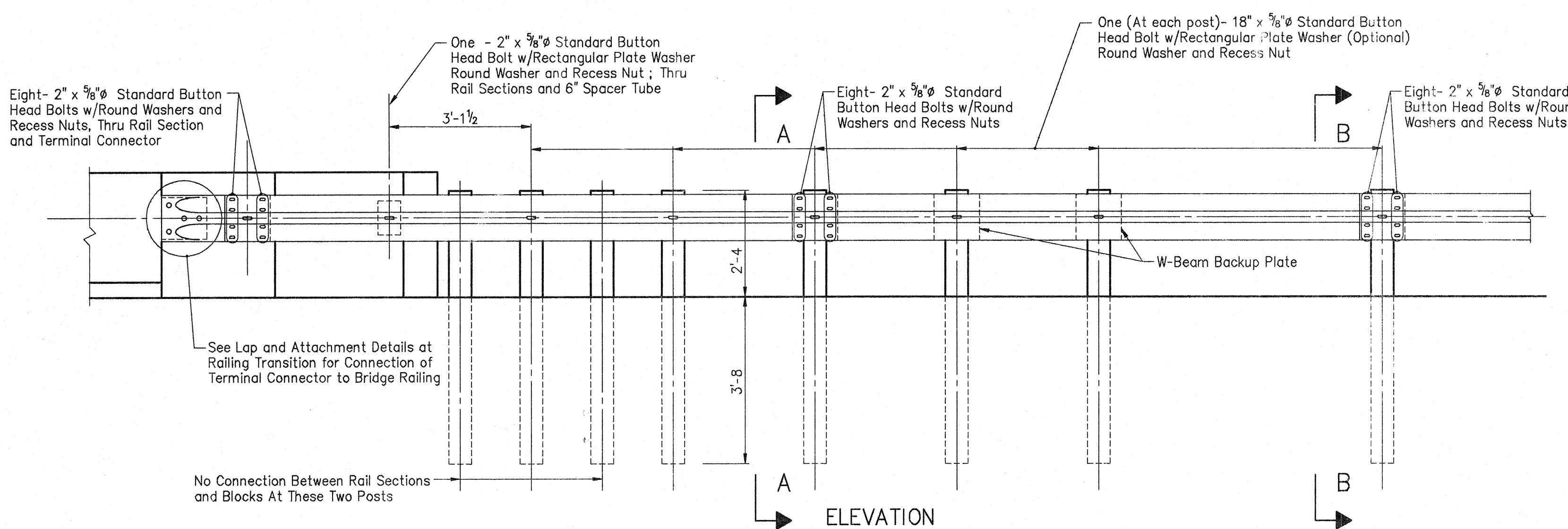
SECTION A-A



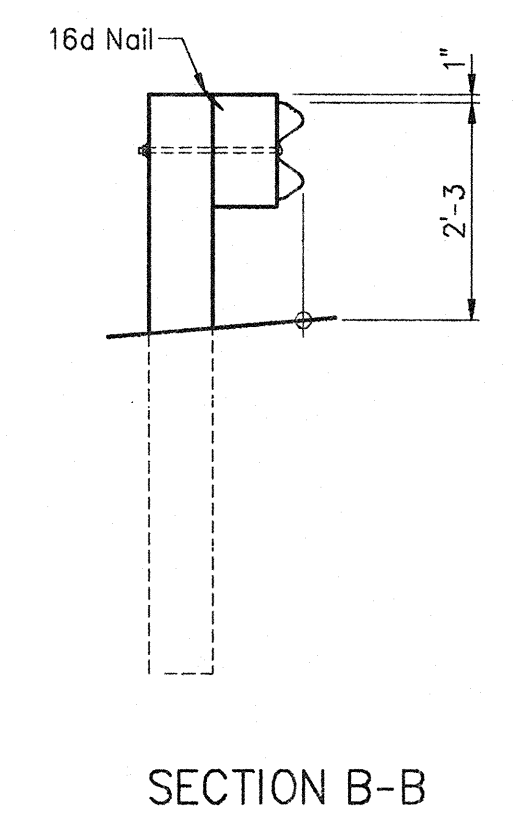
W-BEAM BACKUP PLATE



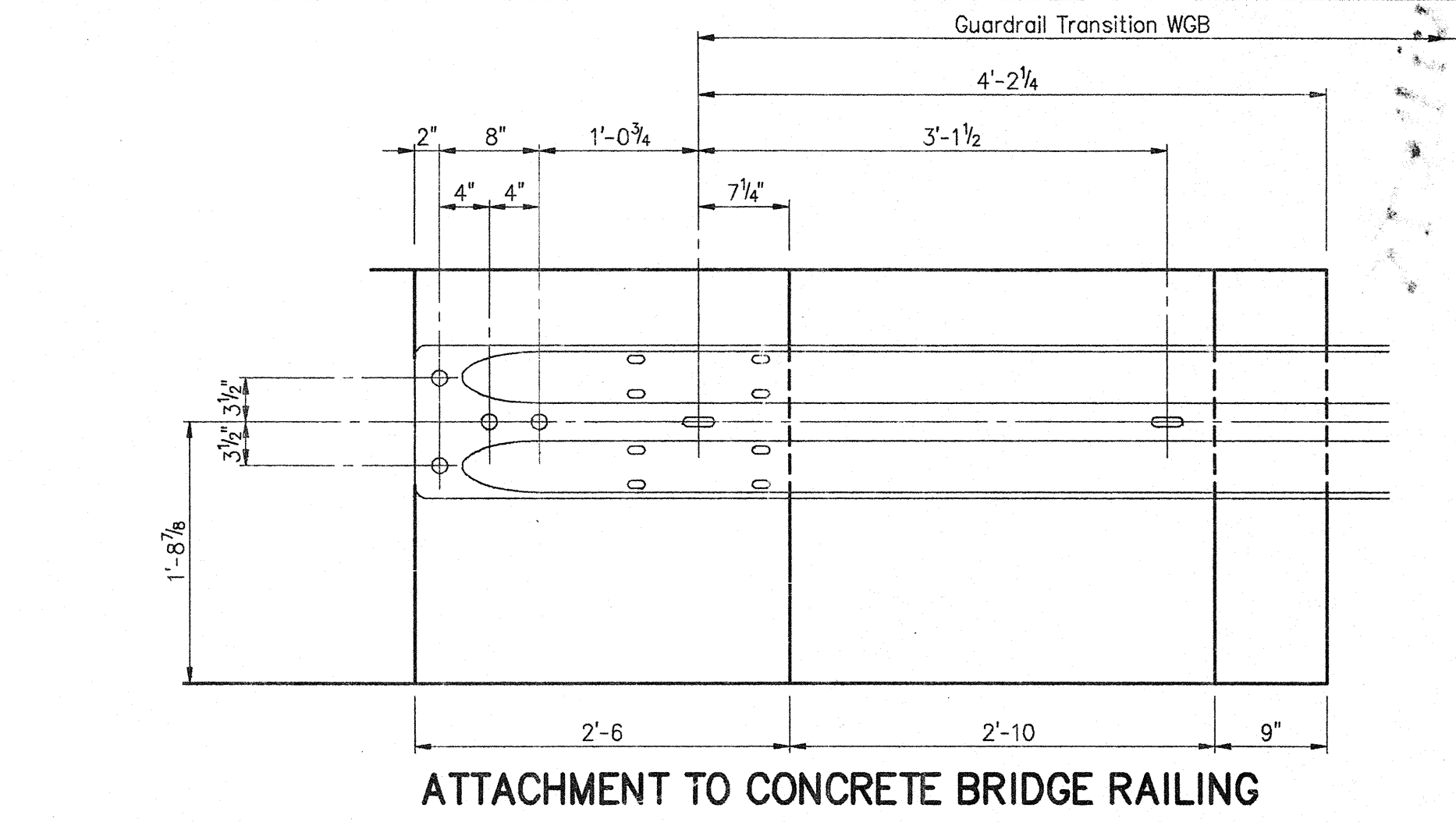
SECTION THRU BEAM ELEMENT



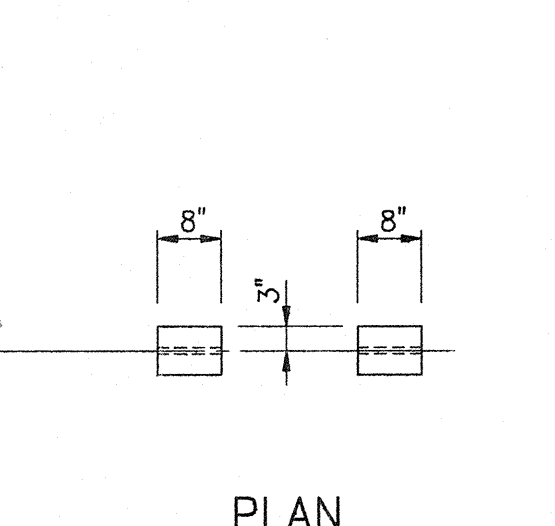
TRANSITION TYPE WGB DETAILS



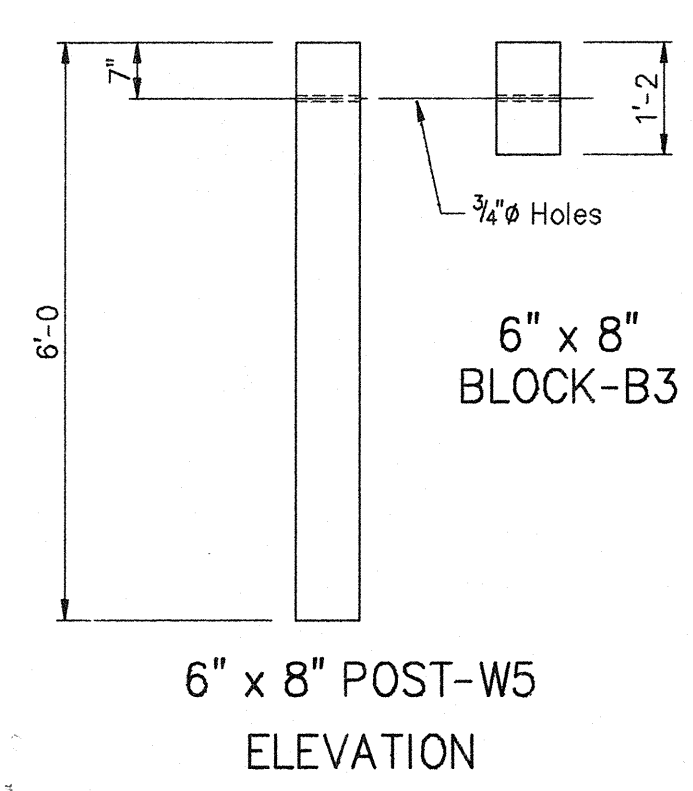
SECTION B-B



ATTACHMENT TO CONCRETE BRIDGE RAILING



PLAN



ELEVATION

POST AND BLOCK DETAILS

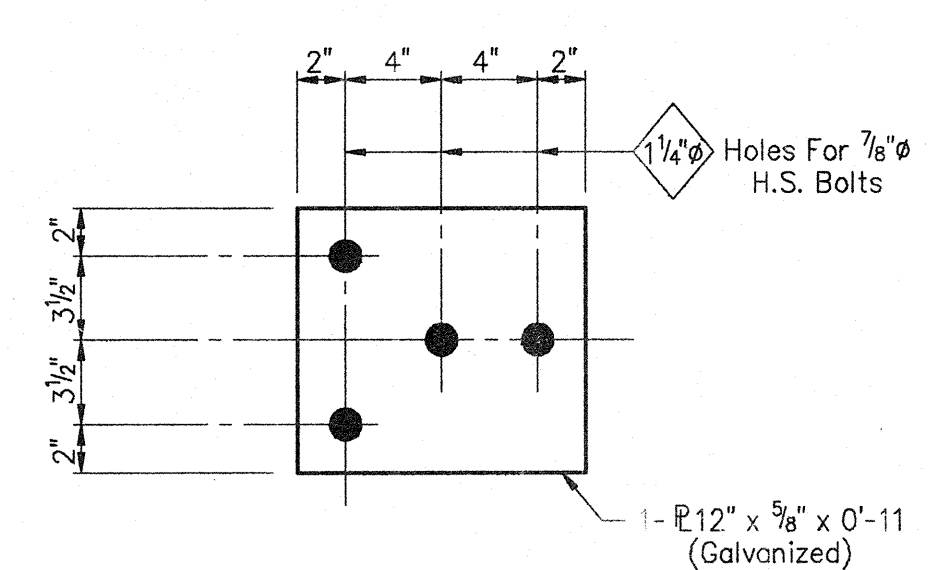
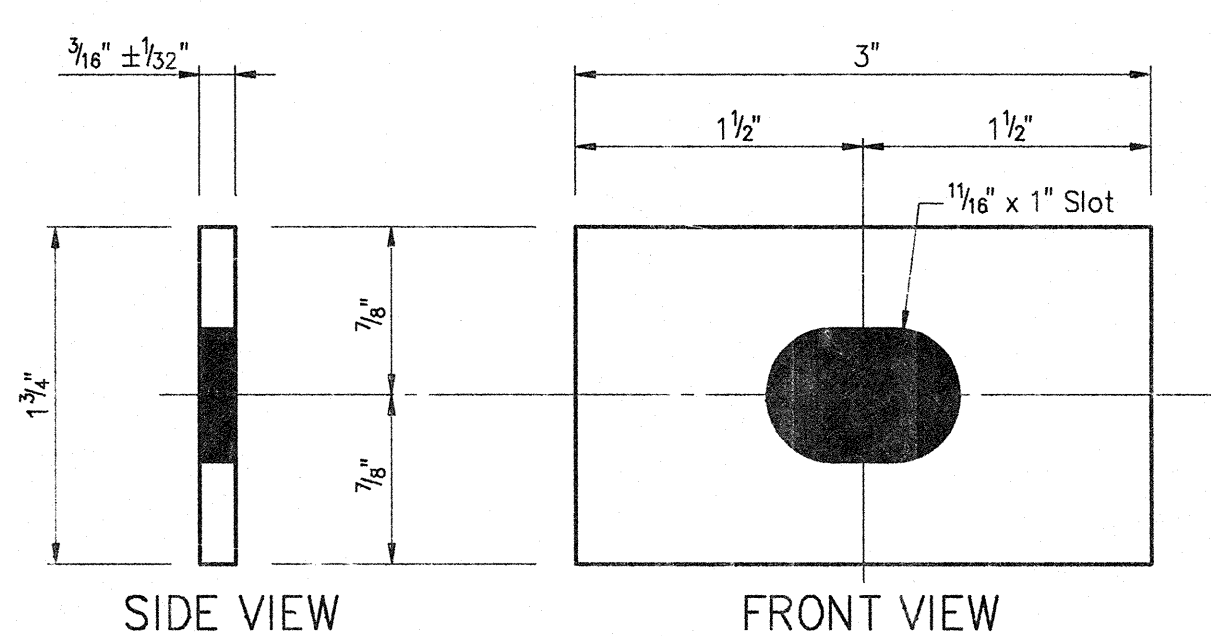


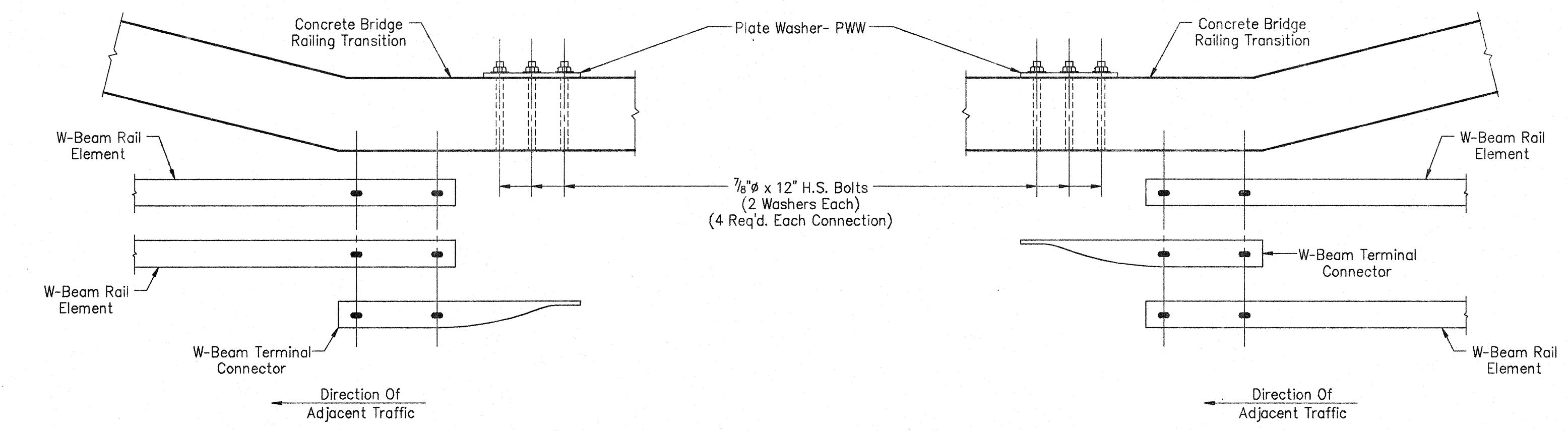
PLATE WASHER - PWW



SIDE VIEW

FRONT VIEW

RECTANGULAR PLATE WASHER

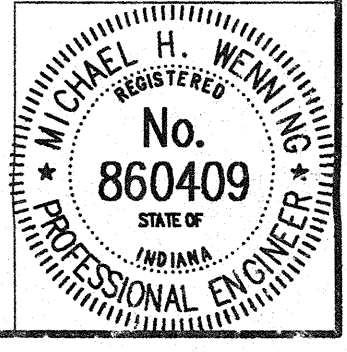


LAP DETAIL AT BRIDGE RAILING TRANSITION

GUARDRAIL TRANSITION TYPE WGB  
INDIANA DEPARTMENT OF TRANSPORTATION

SCALE: - NO SCALE DATE: - FEBRUARY 19, 1992  
SUBMITTED FOR APPROVAL *Michael W. Manning*

DRAWING: - R4 OF R4 SHEET: - 6 OF 23  
PROJECT: - RS-3983(2)  
CONTRACT NO. B-20137  
BRIDGE FILE: - 71-83-5836A



DESIGNED	CK'D
DRAWN DSH 2/14/92	CK'D MHW 2/18/92
TRACED	CK'D
DWG FILE: \91\9123805	PROJECT: 0274/92
PLOT SCALE: 1/8" = 1'-0"	EST DATE: 02/10/92
PLOT ORIGIN: 0,00,0,00	EDITED BY: DSH
CHECKED: D	

No Change